

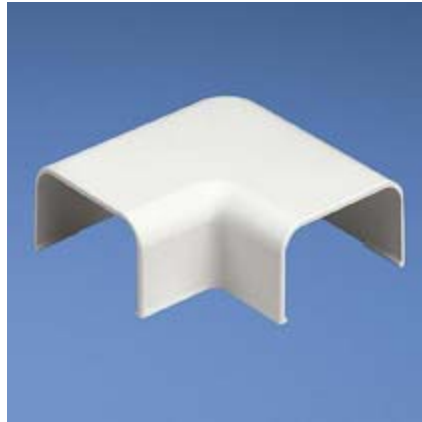


# PEATSA

---

[contacto@peatsa.com](mailto:contacto@peatsa.com)

---



## RAF3IW

Low voltage standard fittings (data only applications under 48V) are used for low voltage applications only and can be used with LD, LDP and LDS Raceways.

|                     |                                                |
|---------------------|------------------------------------------------|
| Part Number         | RAF3IW                                         |
| Product Family      | Standard Fittings for Low Voltage Applications |
| Part Description    | Right Angle Fitting for use with LD3 Raceway.  |
| Product Type        | Low Voltage Fittings                           |
| Color               | Off White                                      |
| Fitting Type        | Right Angle                                    |
| Bend Radius Control | No                                             |
| Product Size        | 3                                              |
| UOM                 | PC                                             |