



# PEATSA

[www.peatsa.com](http://www.peatsa.com)  
[contacto@peatsa.com](mailto:contacto@peatsa.com)

---



## LD5IW6-A

*Pan-Way*® LD Surface Raceway is a single channel raceway designed to route, protect and conceal data, voice and video cabling.

- For routing data and low voltage cabling
- One-piece hinged design allows cables to be laid in
- Factory applied adhesive backing speeds installation
- FT-4 Rated for Canada
- Terminates using surface mount outlet box solutions or *Mini-Com*® Surface Mount Boxes

Part Number	LD5IW6-A
Product Family	<i>Pan-Way</i> ® LD Surface Raceway System
Part Description	One-piece latching surface raceway. Supplied with pre-applied adhesive backed tape. Available in 6', 8', and 10' lengths.
Product Type	Low Voltage Raceway
Color	Off White
Length (Ft.)	6
Inside Diameter (In.)	(A = .38 in <sup>2</sup> )
Product Length	6'
Product Size	5
Raceway Size	1.00" x .60"
UOM	FT



# Pan-Way® LD Surface Raceway System

# PANDUIT®

SPECIFICATION SHEET

## specifications

LD non-metallic series low voltage, one-piece hinged design, single channel surface raceway shall include adhesive backing and shall be made of impact resistant material with a smooth finish that shall not scratch, peel or corrode. The raceway shall include an assortment of bend radius and standard fittings that complement the offering to help route, protect and conceal low voltage data, voice and video cabling. LD raceway shall be available in three sizes and four standard colors that shall be optimized with the Panduit® Pan-Net® communication system.



## technical information

<b>Material:</b>	Rigid PVC
<b>Flammability:</b>	UL94V-0; FT4
<b>Capacity:</b>	Single Channel
<b>Voltage Rating:</b>	50V or less
<b>Operating and Storage Temperature:</b>	0 to 50° C

## key features and benefits

<b>1" bend radius control fittings:</b>	Cables in the raceway will satisfy the minimum 1" bend radius requirement, preventing the potential degradation of cable performance; meets TIA/EIA standards
<b>One-piece hinged design:</b>	Cables can be laid into the raceway, speeding installation and preventing damage to cables
<b>Adhesive backing:</b>	Full length adhesive strip allows easy tool free installation and works well for temporary mounting
<b>Available in different sizes &amp; lengths:</b>	Accommodates varying cable types and capacities. Available sizes - LD3, LD5, LD10 ; Available lengths - 6', 8', 10' (2m length available in Europe only)
<b>Non-metallic construction:</b>	Lightweight, reducing installer fatigue and labor required to install the raceway; solid color throughout will not chip, peel, rust or corrode; easy to cut with standard saws and saw blades, eliminating the need for special cutting devices
<b>Distinct colors:</b>	Available in four standard colors- IW, EI, IG, WH. AW available in Europe only. Raceway is field paintable to match walls and surrounding décor
<b>Full selection of fittings and surface mount boxes:</b>	Wide variety of fittings and surface mount boxes available for various LD raceway applications

## applications

Pan-Way® LD Surface Raceways are designed to provide easy and economical solutions for routing any low voltage cable along smooth and clean perimeter walls,

baseboards or ceilings. This raceway is a perfect solution for schools, hospitals, offices, homes or anywhere a small, secure, low profile raceway is needed.

### LD Raceway

<b>Raceway:</b>	LD3IW**-A LD5IW**-A LD10IW**-A
-----------------	--------------------------------------

### LD Raceway Fittings

<b>Coupler:</b>	CF*IW-E
<b>Inside corner:</b>	ICFC*IW-X
<b>Outside corner:</b>	OCFC*IW-X
<b>Right angle:</b>	RAFC*IW-X
<b>End cap:</b>	ECF*IW-X
<b>Tee:</b>	TFC*IW-X
<b>Four-way cross:</b>	CRFC5IW-X
<b>Drop ceiling/entrance end:</b>	DCF*IW-X
<b>Right angle/entrance end:</b>	RAEFXIW-X
<b>LD5 to LD3 reducer:</b>	RF5X3IW-E
<b>LD10 to LD5 reducer:</b>	RF10X5IW-X
<b>LD10 to LD3 reducer:</b>	RF10X3IW-X
<b>LD5 fire box adapter:</b>	FBA5IW-X
<b>LD10 fire box adapter:</b>	FBA10IW-X

### LD Raceway Installation

<b>Installation tool:</b>	LDW*-V
---------------------------	--------

### LD Raceway Surface Mount Outlet/Junction Boxes

<b>Low Voltage:</b>	
<b>Single gang, one-piece :</b>	JB1IW-A
<b>Single gang, one-piece, deep:</b>	JB1DIW-A
<b>Single gang, two-piece :</b>	JBX3510IW-A
<b>Single gang, two-piece, fast snap:</b>	JB1FSIW-A
<b>In-wall box adapter:</b>	JBA-X
<b>Power rated:</b>	
<b>Single gang, two-piece:</b>	JBP1IW
<b>Single gang, two-piece, deep:</b>	JBP1DIW
<b>Single gang, two-piece, extension:</b>	JBP1EIW
<b>Single gang, two-piece, intermediate:</b>	JBP1IIW
<b>Single gang, two-piece, snap on:</b>	JBP1FSIW
<b>Single gang, two-piece, round:</b>	RJBX3510IW
<b>Double gang, two-piece:</b>	JBP2IW
<b>Double gang, two-piece, deep:</b>	JBP2DIW
<b>Double gang, two-piece, divided:</b>	JBP2SIW
<b>Double gang, two-piece, snap on:</b>	JBP2FSIW

\* Insert raceway size of 3, 5, or 10

\*\* Insert raceway length of 6', 8', or 10'

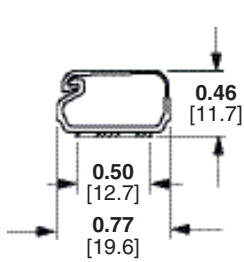
All parts listed in International White (IW) color. To order other colors substitute Electrical Ivory (EI), International Gray (IG), and White (WH).

# Pan-Way® LD Surface Raceway System

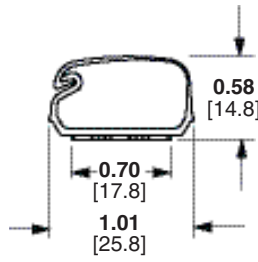
## Wire Fill

Raceway Type and Configuration	Fill Area (in <sup>2</sup> )	Electrical Cables			Data Grade Cables 24 AWG/UTP CM								Audio/Video		Fiber Optic Cable	
		14 AWG	12 AWG	10 AWG	Cat 5e – Plenum		Cat. 6		Cat. 6A		Cat. 6A (SD)		RG6		2 Strand	
		THHN/T90	THHN/T90	THHN/T90	DIA. = 0.193		DIA. = 0.24		DIA. = 0.30		DIA. = 0.24		DIA. = 0.275		DIA. = 0.175	
		FILL			FILL		FILL		FILL		FILL		FILL		FILL	
		MAX	MAX	MAX	SPEC	MAX	SPEC	MAX	SPEC	MAX	SPEC	MAX	SPEC	MAX	SPEC	MAX
		(UL Temp Rise Test)			40%	60%	40%	60%	40%	60%	40%	60%	40%	60%	40%	60%
LD3	0.21	**	**	**	2	4	1	2	1	1	1	2	1	2	3	5
LD5	0.38	**	**	**	5	7	3	5	2	3	3	5	2	3	6	9
LD10	1.00	**	**	**	13	20	8	13	5	8	8	13	6	10	16	24

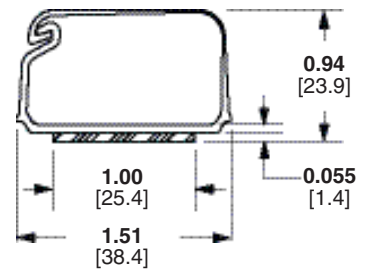
## LD Raceway



LD3

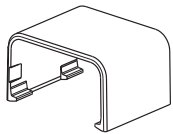


LD5

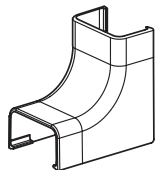


LD10

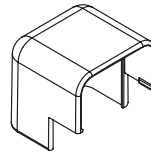
## Fittings



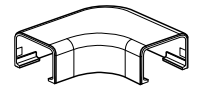
CF



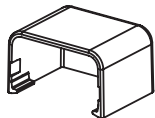
ICFC



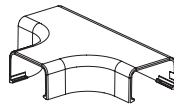
OCFC



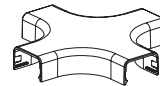
RAFC



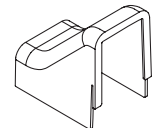
ECF



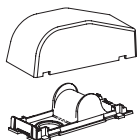
TFC



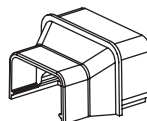
CRFC5



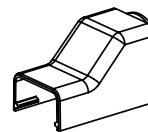
DCF



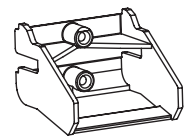
RAEFX



RF



FBA



LDW

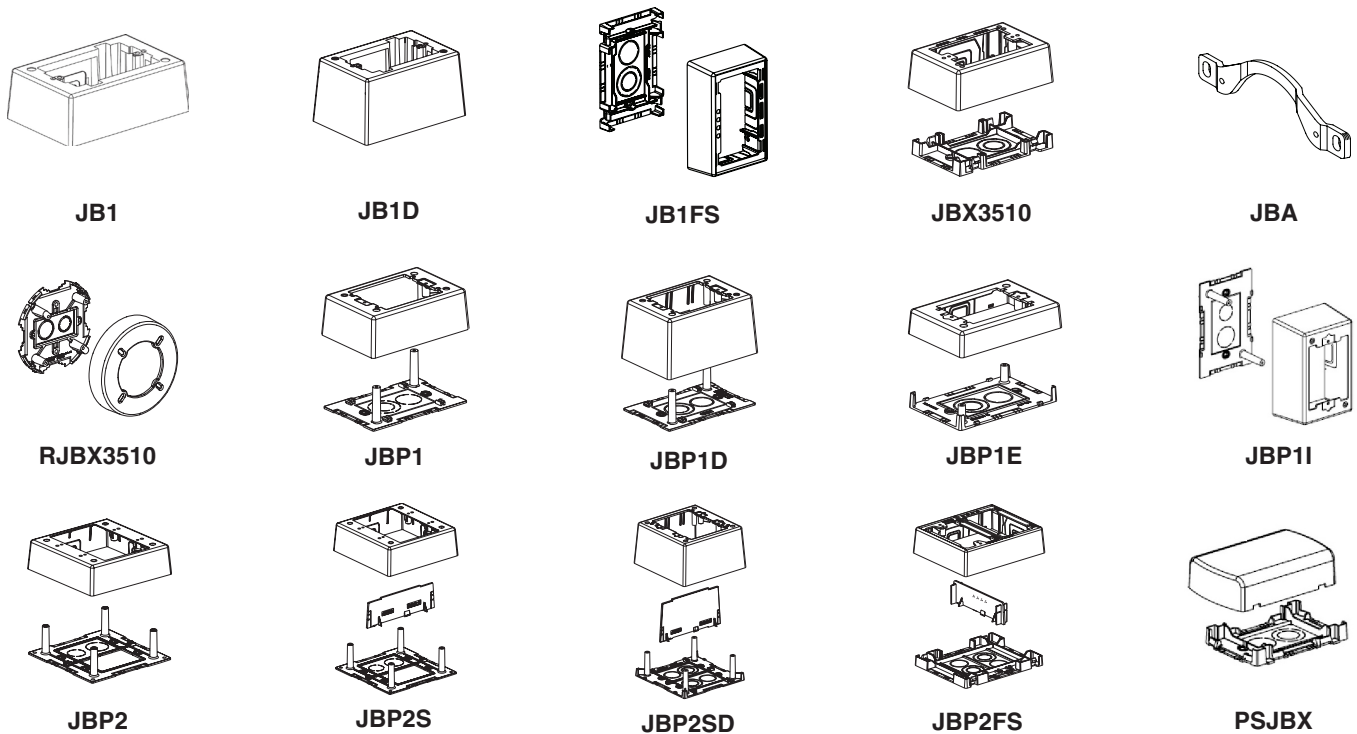
# Pan-Way® LD Surface Raceway System

## Compatible LD Raceway Surface Mount Outlet/Junction Boxes

Low Voltage or Fiber Optic ONLY	
<b>JB1**-A</b>	Single gang one-piece outlet box with adhesive backing.
<b>JB1D**-A</b>	Single gang one-piece deep outlet box with adhesive backing
<b>JB1FS**-A</b>	Fast-Snap™ Single Gang Two-Piece Snap Together Outlet Box with adhesive backing.
<b>JBX3510**-A</b>	Single gang two-piece snap together outlet box with adhesive backing
<b>JBA-X</b>	In-wall box adapters adapt single gang surface mount outlet boxes to in-wall conduit boxes.
Power, Low Voltage or Fiber Optic	
<b>RJBX3510**</b>	Single gang two-piece screw together round outlet box.
<b>JBP1**</b>	Single gang two-piece screw together outlet box.
<b>JBP1D**</b>	Single gang two-piece screw together deep outlet box.
<b>JBP1E**</b>	Single gang two-piece screw together extension outlet box.
<b>JBP1I**</b>	Single gang two-piece screw together intermediate outlet box.
<b>JBP2**</b>	Double gang two-piece screw together deep outlet box
<b>JBP2S**</b>	Double gang two-piece screw together divided outlet box
<b>JBP2D**</b>	Double gang two-piece screw together deep outlet box
<b>JBP2FS**</b>	Fast-Snap™ Double Gang Power Rated Two-Piece Snap Together Outlet Box
<b>PSJBX**</b>	Single gang two-piece snap together power source box.

\*\* = Available colors: International White (IW), Electrical Ivory (EI), International Gray (IG), White (WH) or Arctic White (AW).

## Surface Mount Outlet/Junction Boxes



### WORLDWIDE SUBSIDIARIES AND SALES OFFICES

PANDUIT CANADA  
Markham, Ontario  
cs-cdn@panduit.com  
Phone: 800.777.3300

PANDUIT EUROPE LTD.  
London, UK  
cs-emea@panduit.com  
Phone: 44.20.8601.7200

PANDUIT SINGAPORE PTE. LTD.  
Republic of Singapore  
cs-ap@panduit.com  
Phone: 65.6305.7575

PANDUIT JAPAN  
Tokyo, Japan  
cs-japan@panduit.com  
Phone: 81.3.6863.6000

PANDUIT LATIN AMERICA  
Guadalajara, Mexico  
cs-la@panduit.com  
Phone: 52.33.3777.6000

PANDUIT AUSTRALIA PTY. LTD.  
Victoria, Australia  
cs-aus@panduit.com  
Phone: 61.3.9794.9020

For a copy of Panduit product warranties, log on to [www.panduit.com/warranty](http://www.panduit.com/warranty)

For more information

Visit us at [www.panduit.com](http://www.panduit.com)

Contact Customer Service by email: [cs@panduit.com](mailto:cs@panduit.com)  
or by phone: 800.777.3300

**PANDUIT**®

©2015 Panduit Corp.  
ALL RIGHTS RESERVED.  
SRSRP21--WW-ENG  
Replaces WW-SRSP10  
6/2015