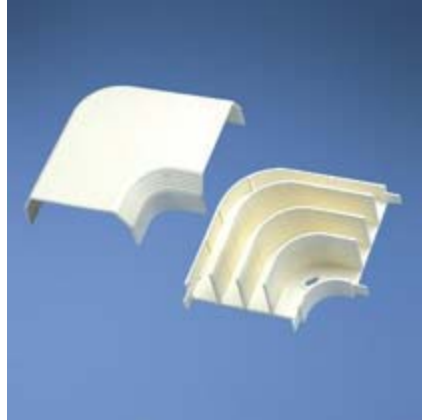




PEATSA

Lauro Aguirre No. 32-203 . Col. Agricultura. México, D.F. 11360
www.peatsa.com Tels. 5342-1586 . 5341-8757
contacto@peatsa.com



T70RAIW-E

Fittings include T-70 Tee divider inserts which separate power and data within the tee fitting, a transition fitting to any LD profile raceway, inside and outside corner fittings, end caps and base and cover coupler fittings and are designed to maintain the TIA/EIA required 1" minimum bend radius of high performance copper and fiber optic cabling systems.

- T-70 fittings are designed to maintain the TIA/EIA 568-B and 569-B required minimum bend radius for high performance copper and fiber optic cabling systems

Part Number	T70RAIW
Product Family	<i>Pan-Way®</i> T-70 Raceway Fittings
Part Description	Right Angle Fitting. Used to join sections of T-70 Raceway at right angles.
Product Type	Power Rated Fittings
Color	Off White
CSA 22.2 No.62-93	Yes
CSA Certified	Yes
UL Listed	Yes
UL5A Listed	Yes
Fitting Type	Right Angle
Bend Radius Control	Yes
CE Compliant	Yes
Product Size	70
UOM	PC