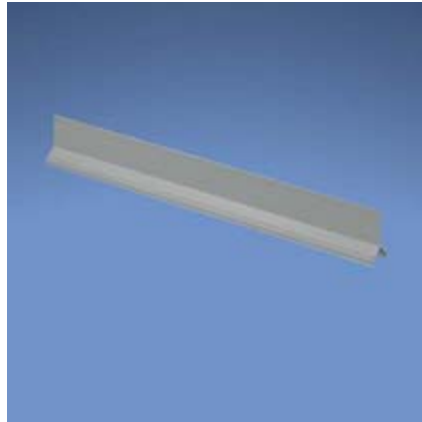




# PEATSA

Lauro Aguirre No. 32-203 . Col. Agricultura. México, D.F. 11360  
[www.peatsa.com](http://www.peatsa.com) Tels. 5342-1586 . 5341-8757  
[contacto@peatsa.com](mailto:contacto@peatsa.com)

---



## T70DW6

Pan-Way® Type T-70 Surface Raceway is an aesthetically designed multi-channel system to route, protect, and conceal data, voice, video, fiber optic and power cabling.

- UL & CSA rated 600V; meets UL5A and CSA C22.2 No. 62.1-03 standards
- Large cable capacity with aesthetically pleasing design
- Tamper resistant
- Compatible with NEMA standard 70mm faceplates or *Pan-Way®* Classic Series Snap-on Faceplates
- Transitions to *PANDUIT®* T-45 and LD Profile Raceways
- Supplied with pre-punched mounting holes

Part Number	T70DW6
Product Family	<i>Pan-Way®</i> T-70 Surface Raceway System
Part Description	T-70/Twin70 Raceway Divider Wall. Snaps onto rails in T-70/Twin-70 Raceway base to create separate channels. Must use wire retainers to ensure channel separation per UL/CSA. Available in 6' and 10' lengths.
Product Type	Power Rated Raceway
Color	Gray
CSA 22.2 No.62-93	Yes
CSA Certified	Yes
UL Listed	Yes
UL5A Listed	Yes
Length (Ft.)	6'
CE Compliant	Yes
Product Length	6'
Product Size	70
Raceway Component	Divider Wall
Raceway Size	–
UOM	FT

