

Order Information

MT10 RACEWAY FITTINGS AND SURFACE BOXES

"Cover Only" fittings: telecommunications applications when bend radius is not critical; or power applications when mitered corners completely encapsulate the wires.

"Base and Cover" fittings: all applications where maintaining 1 1/4" bend radius is critical.

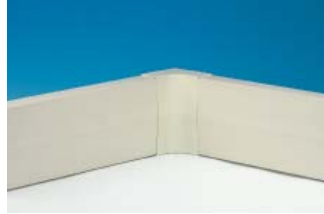
Flat Elbow	
Description	Catalog No.
Cover	MT10FEC
Base and cover	MT10FEBC
1.25" radius	



Conduit Adapter/ Ceiling Fitting	
Catalog No.	MT10CACF
Divided knockouts: End and Base: 1/2" to 2" concentric knock-outs.	



Internal Elbow	
Description	Catalog No.
Cover	MT10IEC
Base and cover	MT10IEBC
1.25" radius	



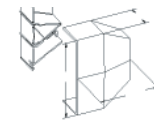
Security Strap	
Use as splice cover or when added security is required.	
Catalog No.	MT10SS



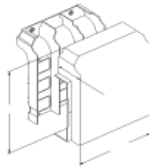
External Elbow	
Description	Catalog No.
Cover	MT10EEC
Base and cover	MT10EEBC
1.25" radius	



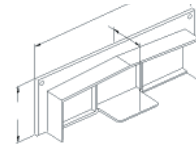
Reducer	
MT10 to MT9.	
Catalog No.	MT10RED



Tee Cover	
Description	Catalog No.
Tee base and cover with divider	MT10TCBC



Surface Panel Connector	
Use to mount MT10 to breaker panel or data enclosure.	
Catalog No.	MT10SPC



Splice Cover	
Catalog No.	MT10SC



Wire Clip	
Catalog No.	MT10WC



End Cap	
Catalog No.	MT10EC



Inline Device Box	
Description	Catalog No.
3-gang*	MT10INDB3
* 1-gang MTP plates or bezels (3 required per box).	



Full Capacity Box	
1-gang MTP/IFP plates.	
Description	Catalog No.
1-gang	MT10FCIB1
2-gang	MT10FCIB2
3-gang	MT10FCIB3



See page G14 for MTP and IFP face plate options.

For Dimensions, see pages G12 to G13.