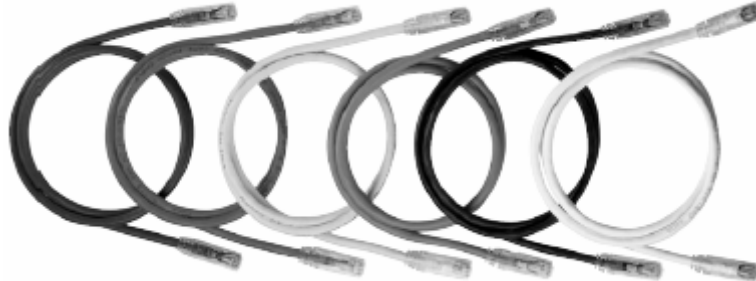




# PEATSA

Martin Mendalde No. 821-1 . Col. Del Valle. México, D.F. 03100  
[www.peatsa.com](http://www.peatsa.com) Tels. 5559-7556 . 5559-4790



## UTPSP3

### specifications

Patch cords shall be constructed of stranded UTP cable and enhanced performance modular plugs at each end. Patch cords shall be used in all work areas and patch panels and shall meet TIA/EIA-568-B.2-1 Category 6 requirements. A variety of lengths and colors shall be available in order to meet individual length and color coding requirements. Patch cords shall be wired to be compatible with both T568A and T568B wiring schemes.

### *technical information*

<b>Performance level:</b>	Exceeds TIA/EIA-568-B.2-1 Category 6 Standard
<b>Component compliance:</b>	ETL tested and approved for Category 6 component compliance
<b>FCC compliance:</b>	Meets FCC Part 68 Subpart F; contacts plated with 50 microinches of gold
<b>IEC compliance:</b>	Meets IEC 60603-7
<b>Materials:</b>	Constructed of 24 AWG UTP cable and <i>TX6 PLUS</i> Modular Plugs for superior performance, plug contacts plated with 50 microinches of gold
<b>UL rated:</b>	#1863

### *applications*

The *TX6 PLUS* Patch Cord applications include commercial offices, healthcare and educational institutions, service providers and manufacturing sites. In order to stay competitive, these businesses are placing increased reliance on their networks to efficiently pass vital and time sensitive business information throughout the building. Critical business applications, which will be

supported by a Category 6 cabling plant potentially include high resolution 3-D modeling, data centers, medical imaging, on-line document publishing and bringing real-time video to the desktop. The superior performance of the *TX6 PLUS* Patch Cord ensures full support of these extended bandwidth Category 6 compatible applications.



# PEATSA

Martín Mendalde No. 821-1 . Col. Del Valle. México, D.F. 03100  
[www.peatsa.com](http://www.peatsa.com) Tels. 5559-7556 . 5559-4790

## *key features and benefits*

<b>Centered de-embedded plug</b>	Performs in center of TIA/EIA component range, ensuring interoperability and excellent performance
<b>Patented tangle free latch</b>	Prevents snags and provides easy release, saving time on frequent moves, adds and changes
<b>Slender strain relief boot</b>	Provides easy access in high-density applications
<b>Integral pair manager</b>	Optimizes performance and consistency by reducing untwist at plug
<b>Labels</b>	Provides identification of performance level, length and quality control number
<b>100% performance tested</b>	Confidence that each patch cord delivers Category 6 performance
<b>Variety of colors and lengths available</b>	Meets individual length and color coding requirements

## **Category 6 Modular Plug Cord Specification TIA/EIA-568-B.2-1**

	Length (ft.)	100 MHz	250 MHz
		Minimum Value (dB)	Minimum Value (dB)
NEXT Loss	3	47.01	39.28
	5	46.66	39.00
	7	46.35	38.77
	10	46.08	38.57
	14	45.54	38.21
	20	45.06	37.93
Return Loss	NA	17.98	14.00