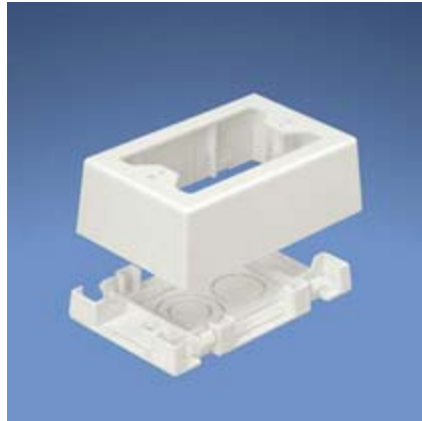




PEATSA

Lauro Aguirre No. 32-203 . Col. Agricultura . México, D.F. 11360
www.peatsa.com Tels. 5342-1586 . 5341-8757
contacto@peatsa.com
Messenger: redes_peatsa@hotmail.com



JBX3510IW-A

Pan-Way® Low Voltage Surface Mount Outlet Boxes are one and two-gang style boxes for low voltage and or fiber optic applications. JBX3510**, JB1**, and JB1D** are supplied with adhesive backing

- JBX3510 assembles without the use of screws for faster installation
- JBX3510, JB1, and JB1D are supplied with adhesive backing to speed installation
- JB1 and JB1D are a one-piece design requiring no assembly

Part Number	JBX3510IW-A
Product Family	<i>Pan-Way</i> ® Low Voltage Surface Mount Outlet Boxes
Part Description	Single Gang Two-piece Snap Together Outlet Box with adhesive backing. Box accepts <i>Pan-Way</i> ® Screw-on Faceplates or any NEMA standard single gang faceplate. For use with <i>Pan-Way</i> ® T45 or LD Profile Raceway. 5.0"L x 3.3"W x 1.6"H (127mm x 83mm x 41mm). Breakouts for 1/2", 3/4", or 1" diameter conduit.
Product Type	Low Voltage
Color	Off White
CSA 22.2 No.62-93	No
UL5A Listed	No
Outlet Box Power Rating	Low Voltage
Outlet Box Size	Single Gang
Outlet Box Type	Two-Piece Snap-Together
UOM	PC