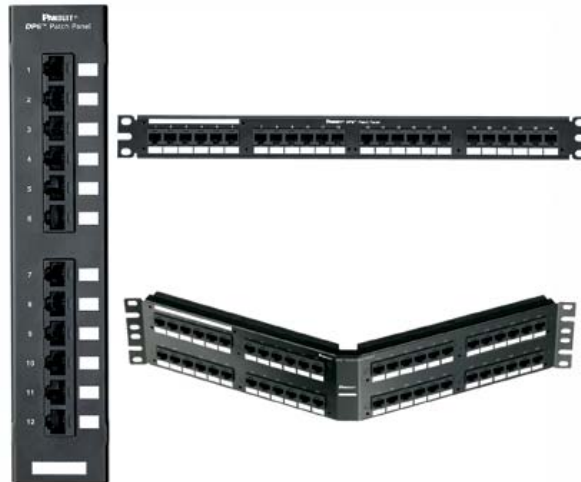




PEATSA

Lauro Aguirre No.32-203 . Col. Agricultura . México, D.F. 11360
Tels: 5342-1586 . 5341-8757
contacto@peatsa.com
www.peatsa.com
Messenger: redes_peatsa@hotmail.com

DP485E88TG



- Exceeds TIA/EIA-568-B.2 Category 5e and ISO 11801 Class D standards
- Each port is 100% tested to ensure NEXT and return loss performance and is individually serialized to support traceability
- Utilizes 110 termination on back panel and includes retention cap for each port
- Each port contains a universal label that is color coded for T568A and T568B wiring schemes
- Angled versions allow for higher density installations by easily routing the patch cords to each side of the panel eliminating the need for horizontal cable management
- Terminates 4 pair, 22 - 26 AWG, 100 ohm, solid or stranded twisted pair cable
- Mount to standard EIA 19" rack or 23" racks with optional extender bracket
- Write-on areas for port and panel identification available
- Can be clearly identified with labels and icons

Part Number	DP485E88TG
Product Family	DP5e™ Patch Panels
Part Description	48 port, Category 5e, patch panel with 48 RJ45, 8 position, 8 wire ports.
Product Type	patch panel
No. of Rack Spaces	2
Performance Level	category 5e
Product Category	COPPER
Product Segment	NETWORK
