

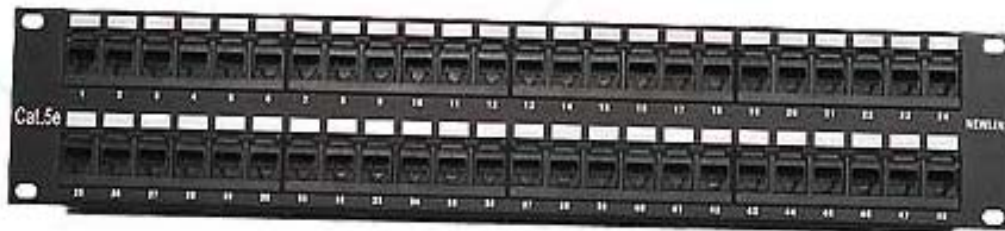


PEATSA

Lauro Aguirre No. 32-203 . Col. Agricultura . Mexico, D.F. 11360
www.peatsa.com Tels. 5342-1586 . 5341-8757
Messenger: redes_peatsa@hotmail.com
contacto@peatsa.com



Part # 2594524



Part # 2594548

2594524 y 2594548

Newlink's range of 1U and 2U patch panel provides a flexible way of installation. EIA/TIA 568 and ISO/IEC 11801 standard approval guarantees the quality. The front surface of our panels is unobstructed by Screw Heads or other hardware for a highly aesthetic appearance. The back view shows IDC blocks on segmented PC boards.

FEATURES:

- Conform to the EIA/TIA-568 Commercial Wiring Standard
- Exceed Near End Cross Talk (NEXT) signal transmission measurements relative to EIA/TIA-568
- According to independent testing surpass the Category 5 transmission speed of 100Mhz, providing consistent performance of Enhanced Category 5 at 350Mhz.
- Accept two wires per IDC, 22-26 AWG, Stranded or Solid.
- Sustain High Data rates with Minimal Cross talk Interference.



PEATSA

Lauro Aguirre No. 32-203 . Col. Agricultura . México, D.F. 11360

www.peatsa.com Tels. 5342-1586 . 5341-8757

Messenger: redes_peatsa@hotmail.com

contacto@peatsa.com

Physical Specifications:

Jacks	IDC Connections Blocks	Panel Face	Circuit Board
Housing: 94V-0 Black ABS	Block: UL94V-0 Polycarbonate terminates 22-26 AWG solid conductors	.060" thick rolled edge black electrostatic powder coated steel	UL 796 .062 FR4 Laminate Mil Spec 275E
Contacts: Beryllium copper with 50 micro-inch gold on contact surfaces over 50 to 100 micro-inch of nickel	Contact: Phosphor bronze tin lead solder plated IDC	Rigid steel strain relief	UL verified and listed Category 5e

ORDERING INFORMATION:

Item #	Description	# of Ports	Connector	Standard EIA/TIA	Dimensions
2594512	Patch Panel Cat 5e UTP	12-port	RJ45 110 Block	568A&B	1.75" x 19" x 3.5"
2594524	Patch Panel Cat 5e UTP	24-port	RJ45 110 Block	568A&B	1.75" x 19" x 3.5"
2594548	Patch Panel Cat 5e UTP	48-port	RJ45 110 Block	568A&B	3.5" x 19" x 3.5"