



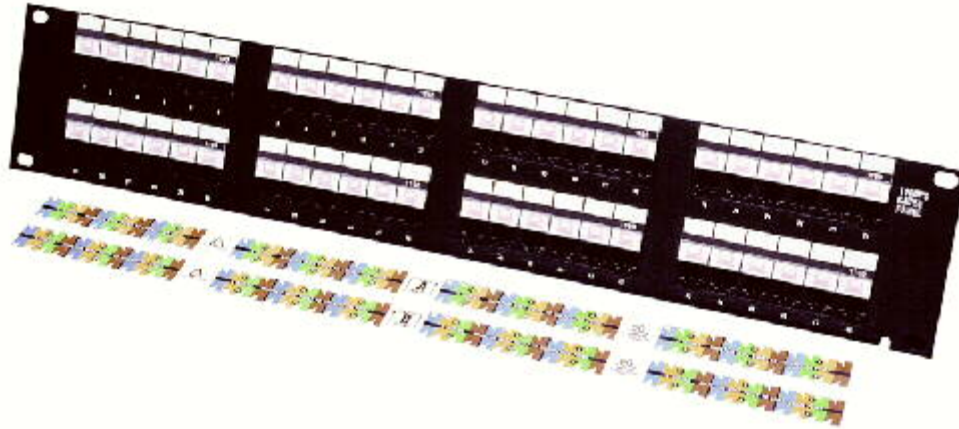
PEATSA

Lauro Aguirre No. 32-203 . Col. Agricultura México, D.F. 11360

www.peatsa.com Tels. 5342-1586 . 5341-8757

Messenger: redes_peatsa@hotmail.com

contacto@peatsa.com



108208935

PowerSUM 1100 Patch Panels - Category 5e

The 1100PSCAT5E Modular Jack Panel is a 19-inch rack mountable RJ45 jack panel. The 1100PSCAT5E accommodates repeated line moves, additions and rearrangements. The IDC connection on the rear of the panel houses the printed wiring board that provides continuous connection to the 8-pin modular jacks on the front. The result is a hard-working panel that allows a gas-tight termination of equipment on 110 connectors. The panel is available with 24, 48 or 96 RJ45 ports. The 1100PSCAT5E Panel kit includes new icon labels with plastic holders that you can mount on the front of the panel for easy port identification. The 1100PSCAT5E has an enclosed Printed Wiring Board (PWB) for protection. Cable tie slots on each end of each 6-port module allow for the use of cable ties (provided) to secure the cable at the edge of the module. The panel is capable of handling either T568A or T568B wiring; you simply select the appropriate label and wire the product as either A or B depending on your customer requirements.

- Minimum insertion life: 750 cycles
- T568A/B wired
- Label strips for both front and back of panel

Tech. Info & Standards:

Rated to PowerSUM performance

TIA/EIA Category 5e compliant

Meets UL XP6 specifications



PEATSA

Lauro Aguirre No. 32-203 . Col. Agricultura México, D.F. 11360
www.peatsa.com Tels. 5342-1586 . 5341-8757
Messenger: redes_peatsa@hotmail.com
contacto@peatsa.com

Fabricante	SYSTIMAX SOLUTIONS
Part Number del fabricante	1100PSCAT5E-48
Código de cliente	108208935
Descripción	PANEL 1100 POWERSUM CAT5E 48 PORT RJ45 A 110 T568A/B 108208935 OCUPA 2U

Características	
Number of Ports:	48
Wiring:	A/B UNIVERSAL
Termination:	110-MOD
Rack Units:	2
Category/Level:	LEVEL 6 AND/OR CATEGORY 5E
Color:	BLACK
Market Name:	SYSTIMAX SCS
Family:	POWERSUM
Sub Family:	1100 PATCH PANEL
Comcode	108208935
Description	48-port, 2RMS
Vendor No.	1100PSCAT5E-48