



# PEATSA

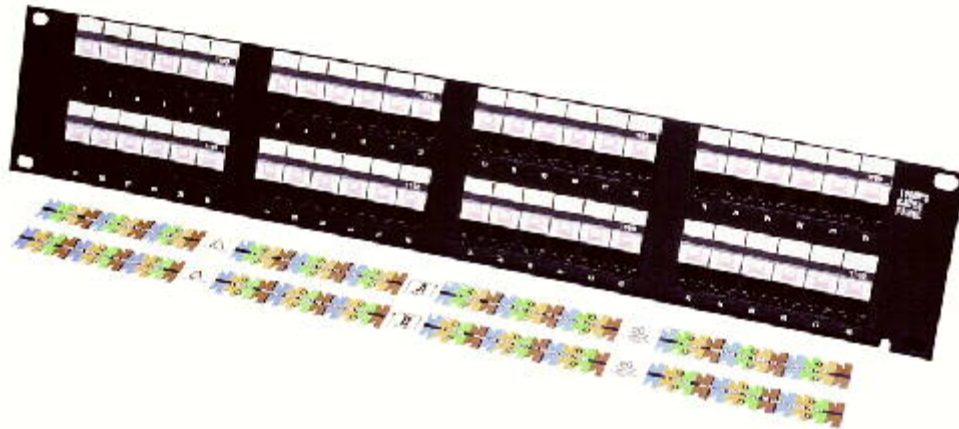
Lauro Aguirre No. 32-203 . Col. Agricultura México, D.F. 11360

[www.peatsa.com](http://www.peatsa.com) Tels. 5342-1586 . 5341-8757

Messenger: [redes\\_peatsa@hotmail.com](mailto:redes_peatsa@hotmail.com)

[www.peatsa.com](http://www.peatsa.com)

---



## 108208919

### PowerSUM 1100 Patch Panels - Category 5e

The 1100PSCAT5E Modular Jack Panel is a 19-inch rack mountable RJ45 jack panel. The 1100PSCAT5E accommodates repeated line moves, additions and rearrangements. The IDC connection on the rear of the panel houses the printed wiring board that provides continuous connection to the 8-pin modular jacks on the front. The result is a hard-working panel that allows a gas-tight termination of equipment on 110 connectors. The panel is available with 24, 48 or 96 RJ45 ports. The 1100PSCAT5E Panel kit includes new icon labels with plastic holders that you can mount on the front of the panel for easy port identification. The 1100PSCAT5E has an enclosed Printed Wiring Board (PWB) for protection. Cable tie slots on each end of each 6-port module allow for the use of cable ties (provided) to secure the cable at the edge of the module. The panel is capable of handling either T568A or T568B wiring; you simply select the appropriate label and wire the product as either A or B depending on your customer requirements.

- Minimum insertion life: 750 cycles
- T568A/B wired
- Label strips for both front and back of panel

#### Tech. Info & Standards:

Rated to PowerSUM performance

TIA/EIA Category 5e compliant

Meets UL XP6 specifications



# PEATSA

Lauro Aguirre No. 32-203 . Col. Agricultura México, D.F. 11360  
[www.peatsa.com](http://www.peatsa.com) Tels. 5342-1586 . 5341-8757  
Messenger: [redes\\_peatsa@hotmail.com](mailto:redes_peatsa@hotmail.com)  
[contacto@peatsa.com](mailto:contacto@peatsa.com)

---

<b>Fabricante</b>	SYSTIMAX SOLUTIONS
<b>Part Number del fabricante</b>	1100PSCAT5E-24
<b>Código de cliente</b>	108208919
<b>Descripción</b>	PANEL 1100 POWERSUM CAT5E 24 PORT RJ45 A 110 T568A/B 108208919 OCUPA 1U

<b>Características</b>	
<b>Number of Ports:</b>	24
<b>Wiring:</b>	A/B UNIVERSAL
<b>Termination:</b>	110-MOD
<b>Rack Units:</b>	1
<b>Category/Level:</b>	LEVEL 6 AND/OR CATEGORY 5E
<b>Color:</b>	BLACK
<b>Market Name:</b>	SYSTIMAX SCS
<b>Family:</b>	POWERSUM
<b>Sub Family:</b>	1100 PATCH PANEL
<b>Comcode</b>	108208919
<b>Description</b>	24-port, 1RMS
<b>Vendor No.</b>	1100PSCAT5E-24